

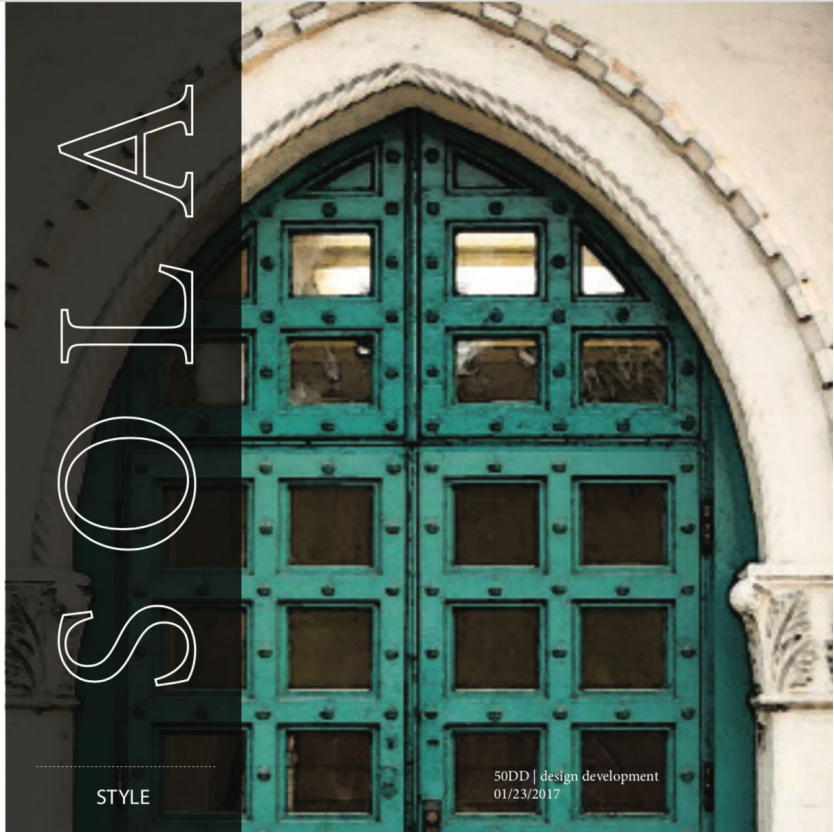
SAMANTHA STIEGLER
PROFESSIONAL DESIGN PORTFOLIO



SOLA

PACIFIC HIGHLANDS RANCH
SAN DIEGO

THE FOLLOWING VENUES SHOWCASE MY WORK DESIGNING PUBLIC AMENITY SPACES FOR MULTI-FAMILY RESIDENTIAL PROPERTIES AT STYLE INTERIORS. SOLA WAS MY LARGEST PROJECT AND FIRST OPPORTUNITY OVERSEEING THE FF&E PROCUREMENT DEPARTMENT. I WAS RESPONSIBLE FOR SOURCING EACH PIECE OF FURNITURE AND SELECTING ITS APPROPRIATE UPHOLSTERY AND FINISH, IN ADDITION TO ALL LIGHTING FIXTURES AND ACCESSORIES. MY JOB WAS TO AESTHETICALLY COORDINATE THEM WITH EACH OTHER AND THEIR SURROUNDINGS. SPACE PLANNING ARRANGEMENT WAS REQUIRED TO MEET ADA AND COMMERCIAL BUILDING CODE STANDARDS AND CLEARANCES. OVERSEEING BUDGET MAINTENANCE AS WELL AS TIMELY AND SAFE DELIVERY AND INSTALLATION WAS CRUCIAL.

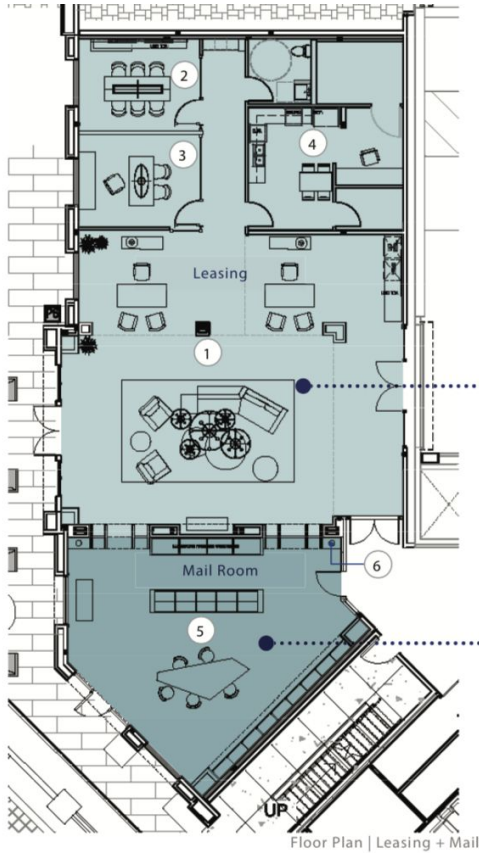


STYLE

50DD | design development
01/23/2017

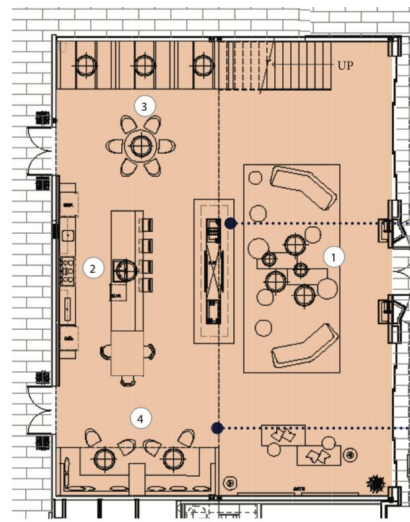
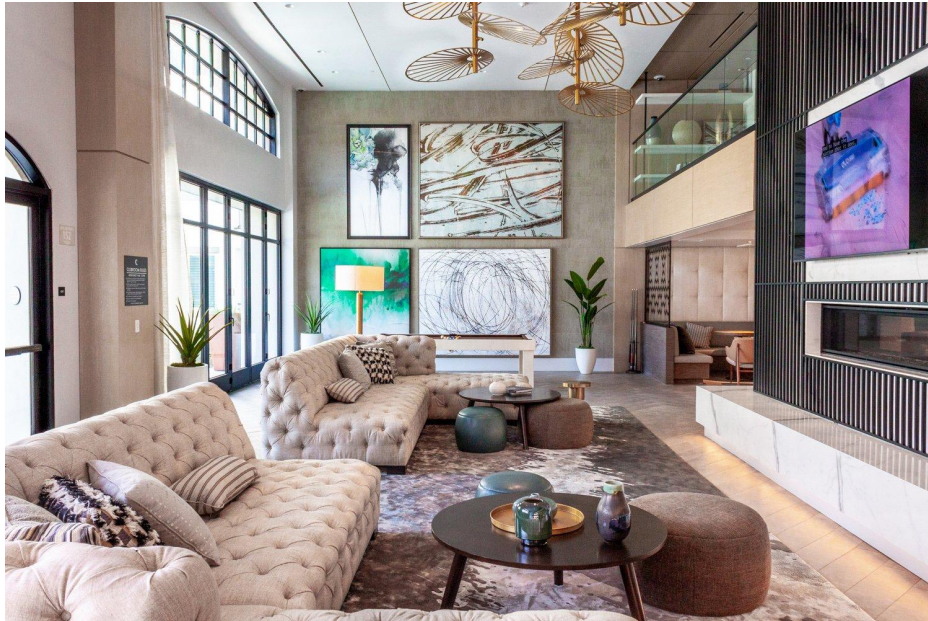
LEASING OFFICE

THE FLOOR PLAN IS INDICATED TO THE RIGHT REPRESENTING THE PICTURE BELOW. FOR THE LEASING OFFICE WE CHOSE CONTRASTING VELVETS AND LEATHERS TO SOFTEN AGAINST THE HEAVY METALS WHILE MAINTAINING THE LUXURIOUS VIBE. THE TRANQUIL SPECTRUM OF TEALS AND SAGE HUES RELAX THE ROOM AND KEEP TO THE COASTAL THEME. GUESTS ARE INSTANTLY WOWED BY THE KNOLL PLATNER CHAIRS IN FLUFFY MOHAIR. IT WAS MY DESIGN DECISION TO MOVE THE COFFEE STATION FROM THE MAILROOM TO THE LEASING OFFICE WITH THE INTENTION OF TREATING GUESTS AND ENCOURAGING POTENTIAL RESIDENTS TO STAY LONGER IN THE BEAUTIFUL SPACE.



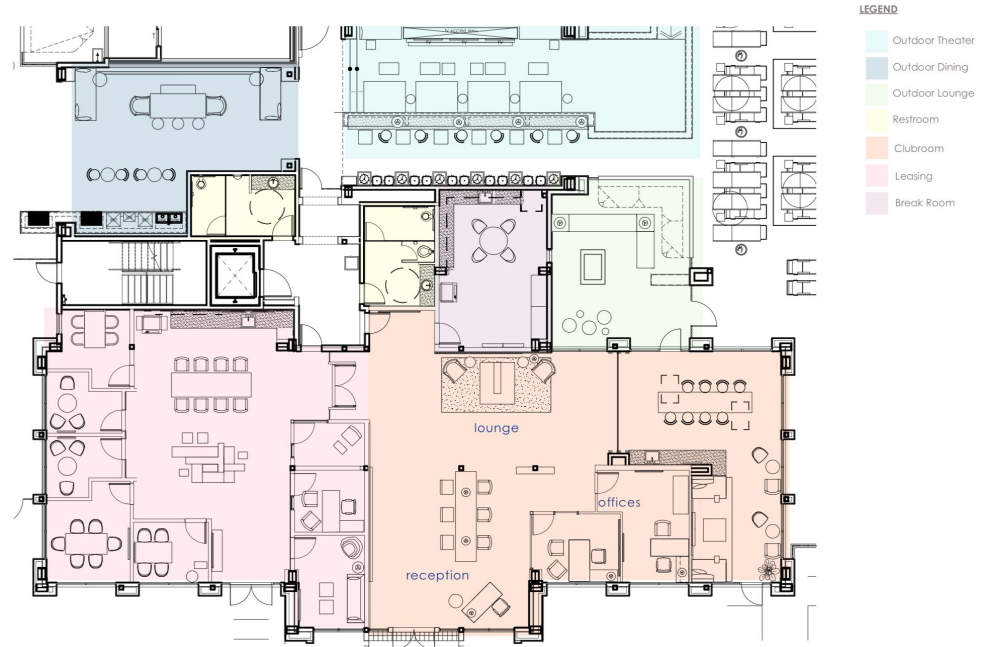
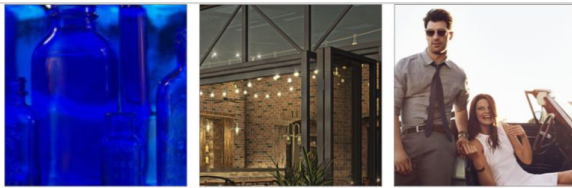
THE CLUBROOM

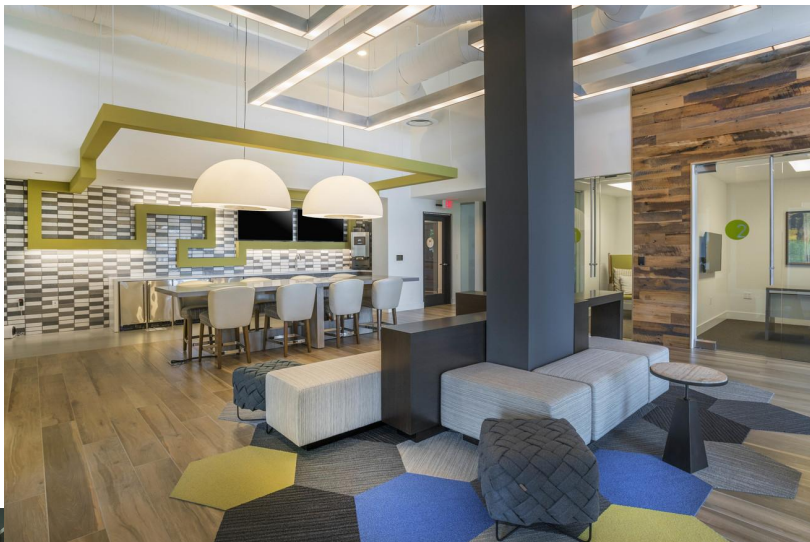
FOR MY FAVORITE ROOM WE WENT BOLD WITH LARGE TUFTED SOFAS FROM RESTORATION HARDWARE TO SOFTEN THE STONE AND METAL FEATURES. BECAUSE THE CLUBROOM WAS ADJACENT TO THE POOL, WE USED DURABLE WATERPROOF FABRIC FOR THE SOFA AND PAIRED IT WITH LARGE SCALE PATTERNED PILLOWS. INSPIRED BY MINOTTI'S TABLE TRIOS, WE CUSTOM DESIGNED SOPHISTICATED MODULAR AND VERSATILE COFFEE TABLE SETS. THE GIGANTIC SURYA RUG WAS INSPIRED BY THE ARTWORK AROUND THE ROOM. CLASSIC ARMLESS BRABBU COUNTER STOOLS FLATTERED THE KITCHEN IN A TEAL SPILL-SAFE VINYL. I DECORATED THE FLOATING SHELVES WITH COASTAL ACCESSORIES LIKE PETRIFIED DRIFTWOOD, OMBRE POTTERY AND MALIBU LITERATURE,



CORE | ANAHEIM

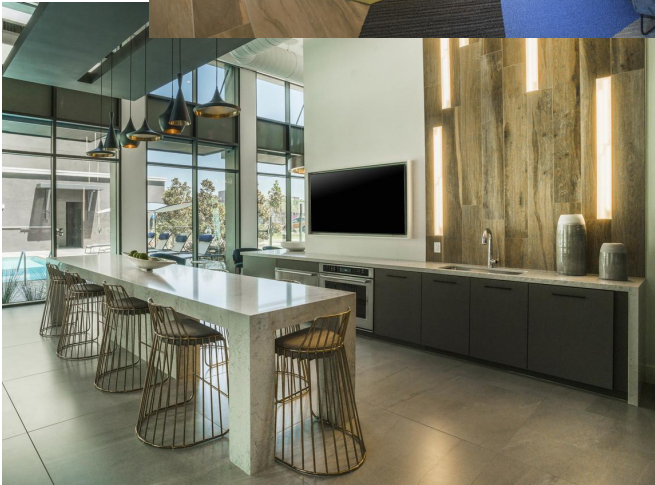
THIS SPECIFIC PROJECT WAS A CHALLENGING DESIGN CONCEPT, YET OPENED MY EYES TO THE BEAUTY OF CONTRASTING PATTERNS, TEXTURES, COLORS AND STYLES.





CORE | ANAHEIM

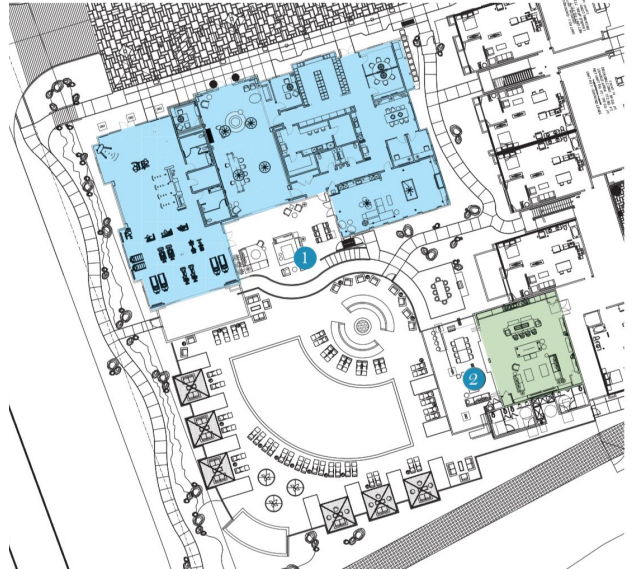
TO ACHIEVE THIS BORDERLINE FUNKY MASCULINE TECHY-VIBE, WE CHOSE YOUTHFUL BOYISH VARIETIES LIKE CHARTREUSE GREEN, ELECTRIC BLUE, MUSTARD YELLOW AND RUSTY ORANGE WHICH WERE HUMBLLED WITH A MONOCHROMATIC PALETTE, AND SOPHISTICATED WITH STARK LINES, NATURAL WOOD ELEMENTS AND CLASSIC PATTERNS LIKE HOUNDSTOOTH AND CHECKERS. THE KEY TO THIS LOOK WAS *TEXTURE* AND CONTRAST. MODERN LIGHT FIXTURES AND FURNITURE PIECES KEEP IT COOL WHILE UNEXPECTED HEX CARPET SQUARES AND MODULAR SEATING KEEPS IT HIP AND YOUNG.





MARISOL CARLSBAD

NORTH COUNTY & CARLSBAD ARE A CANVAS FOR CALIFORNIA OLD AND NEW, INSPIRING THIS RUSTIC WINE COUNTRY RESORT STYLE LIVING. AGRARIAN ROOTS AND CULTURAL SIGNIFICANCE DEFINE THIS STYLE: CASUAL AND ELEGANT FORMS, REFINED LINES, OLD WORLD FIXTURES, AND CONTEMPORARY PATTERNS. A BOUTIQUE LIFESTYLE.



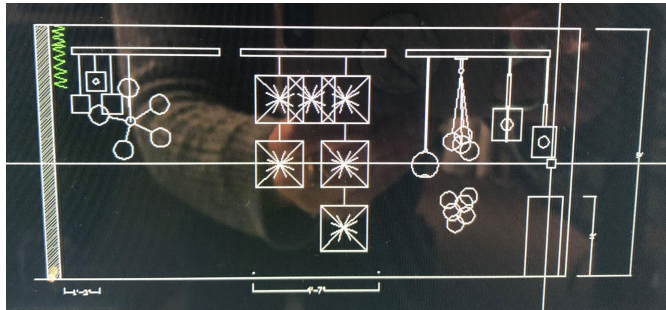
LISA MCDENNON DESIGN

HINKLEY LIGHTING SHOWROOM

IN CHARGE OF SHOWROOM DESIGN FOR LISA'S HINKLEY LIGHTING COLLECTION DEBUT AT DALLAS MARKET CENTER, TEXAS FOR *LIGHTOPIA*, THE LARGEST LIGHTING TRADE EVENT IN NORTH AMERICA.

SPACE PLANNED SHOWROOM FROM CONCEPTUAL DRAWINGS TO FEATURE EACH PRODUCT FAMILY WITH STRATEGIC LIGHTING ELEVATIONS. DESIGNED CIRCULATION TO PROMOTE COLLECTION WHILE STIMULATING UNIQUE VIEWER EXPERIENCE.

SOURCED AND PROCURED FURNITURE, ACCESSORIES AND COORDINATED DRAPERY INSTALLATION. PROMOTED BRAND BY INCORPORATING HINKLEY'S SIGNATURE YELLOW HUE.



[NOTE: IPHONE PHOTO OF PRELIMINARY CAD FILE FROM ARCHIVE FOR REFERENCE]



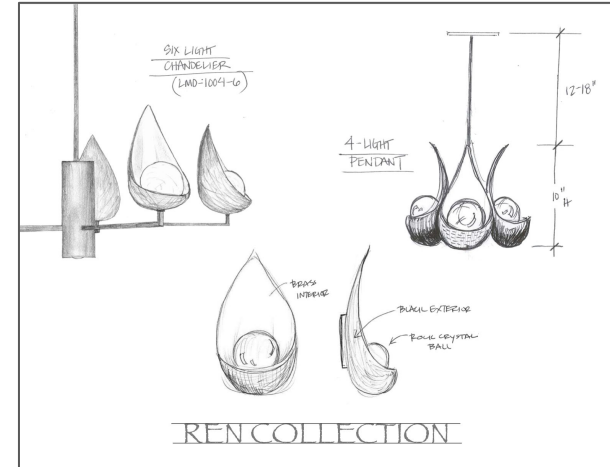
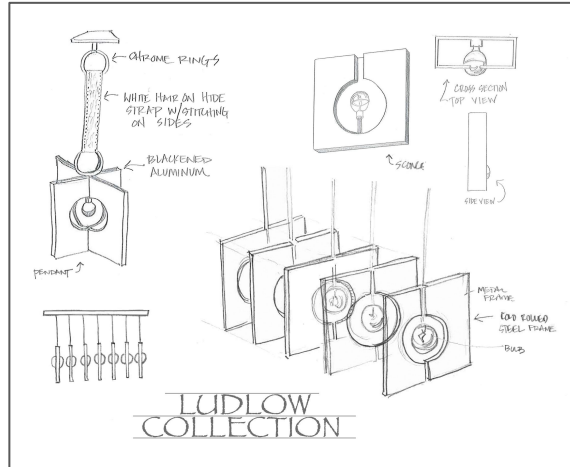
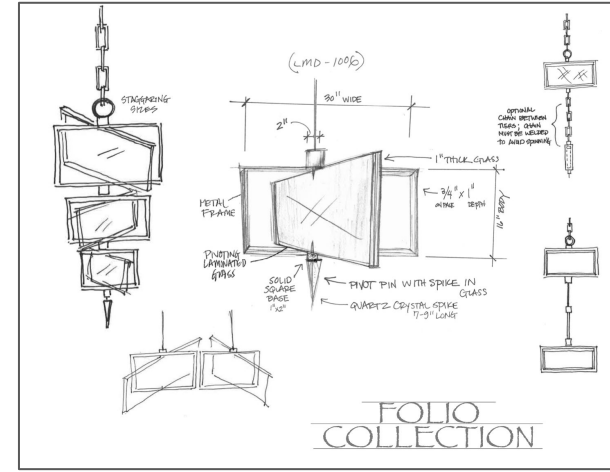
HINKLEY SHOWROOM



[PICTURED RIGHT: MY PERSONAL QUICK HAND SKETCHES FOR THE SHOWROOM GALLERY WALL]

HINKLEY SHOWROOM GALLERY WALL

THE IMAGES PICTURED TO THE RIGHT CONTAIN A FEW OF THE DESIGN PROCESS SKETCHES SHOWCASING THE EVOLUTION OF HER LIGHTING COLLECTION. I COMPILED THESE FROM ARCHIVES AND GRAPHICALLY ARRANGED THEM VIA PHOTOSHOP, DRAWING A FEW SKETCHES MYSELF. THEY ARE HUNG ON A GALLERY WALL IN THE SHOWROOM ON WATERCOLOR PAPER, SEALED IN CUSTOM ACRYLIC FRAMES OF WHICH I SOURCED AND PROCURED.





PALM SPRINGS MODERNISM WEEK CHRISTOPHER KENNEDY DESIGN HOUSE, 2019

HELPED PULL FABRIC OPTIONS FOR OUTDOOR PATIO PILLOWS.
SELECTED COORDINATING DECORATIVE TRIMS AND CORDS INSPIRED
BY THE BEDROOM ACCENT WALL. ALSO HELPED DESIGN MASTER
CLOSET DESIGN...



PALM SPRINGS MODERNISM WEEK MASTER CLOSET

HELPED DRAW AND REVISE MASTER CLOSET PLANS IN AUTOCAD.
ASSISTED IN WALLPAPER AND COLOR MATCHING PAINT
SELECTIONS, COMPARING DRAW DOWNS AND CONSULTING WITH
CALIFORNIA CLOSETS TO COORDINATE LED LIGHTING.

TEXTILES

I HAVE A SPECIAL INTEREST IN TEXTILES AND ENJOY COMPLETING PILLOW AND BEDDING SPECIFICATIONS FOR UPHOLSTERED ITEMS, PROVIDING ANY AND ALL FABRIC INFORMATION TO THE MANUFACTURER (DETAILS TO INCLUDE PILLOW SIZE AND STYLE, FABRIC COLORWAYS, REPEAT/WIDTH, TRIM/EDGE DETAILS, INSERT/FILL RATIO, ENCLOSURE TYPE, SIDEMARK/ROOM AND DRAWINGS WITH CALL OUTS)

[PICTURED RIGHT: A SPECIAL PROJECT TO CREATE A CLIENT'S DREAM LOUNGE CHAIR. WE UPHOLSTERED THE LOVELY BAKER ATHENS CHAIR IN A JEAN DE MERRY COM WITH A CUSTOM SABLE FINISH. ACCENTED WITH A PERFECTLY SIZED LUMBAR PILLOW IN AN HERMES FABRIC AND COMPLEMENTARY DECORATIVE CORD. I CHOSE TO USE A COORDINATING SATIN ROMO FABRIC FOR THE BACK TO LOWER THE COST]

